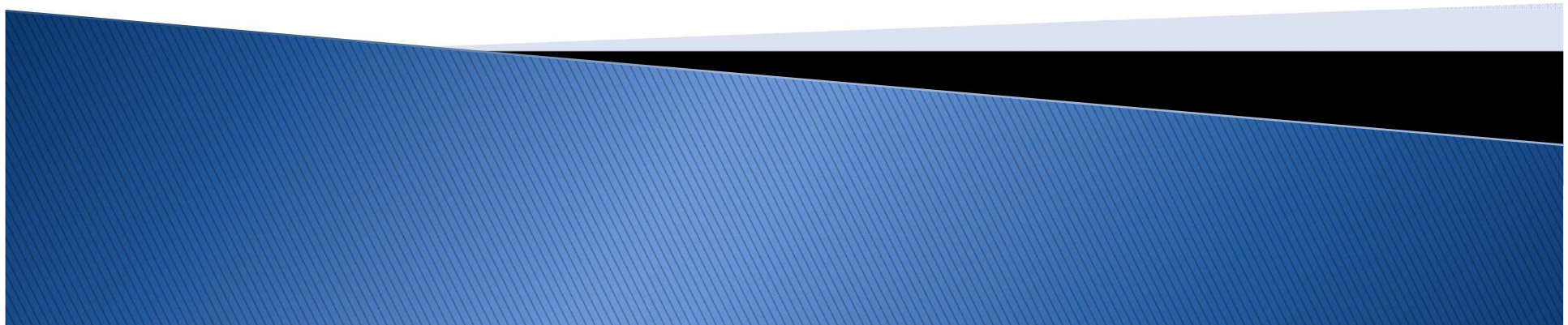


East Lancashire Hospitals NHS Trust

Application for Foundation Trust Status



Key Learning Points

- ▶ What is a Foundation Trust?
- ▶ Why should we become one?
- ▶ What the Regulator (Monitor) looks for
- ▶ How will we operate?
- ▶ The Integrated Business Plan
- ▶ Key dates



What is a Foundation Trust

- ▶ Independent, public benefit organisation, free from central government control
- ▶ Locally Represented
- ▶ Providers of healthcare according to core NHS Principles



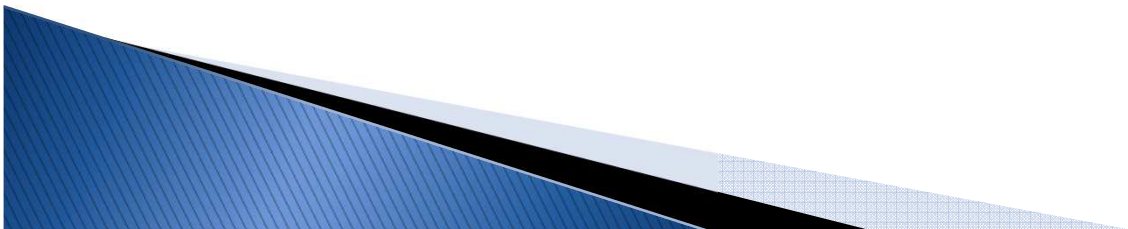
Why should we become a Foundation Trust

- ▶ Organisational development not process
- ▶ We must go through the application process to be authorised
- ▶ We must continue to change how we work as an FT and be an even better provider of health care services



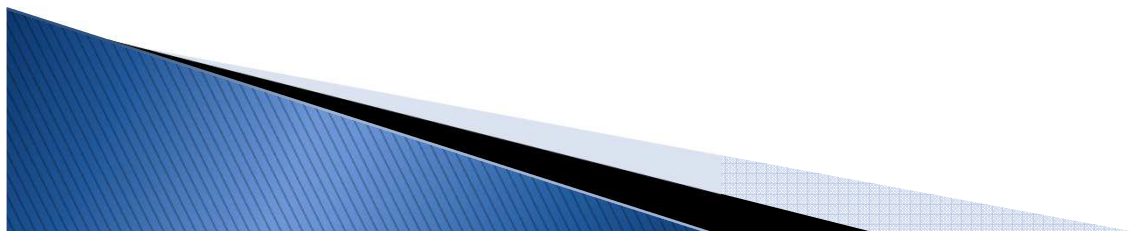
What the Regulator (Monitor) looks for

- ▶ Legally constituted
- ▶ Well governed
- ▶ Financially viable
- ▶ Quality of services
- ▶ Robust service delivery plans
- ▶ Representative of local population and local health, education and social care partners

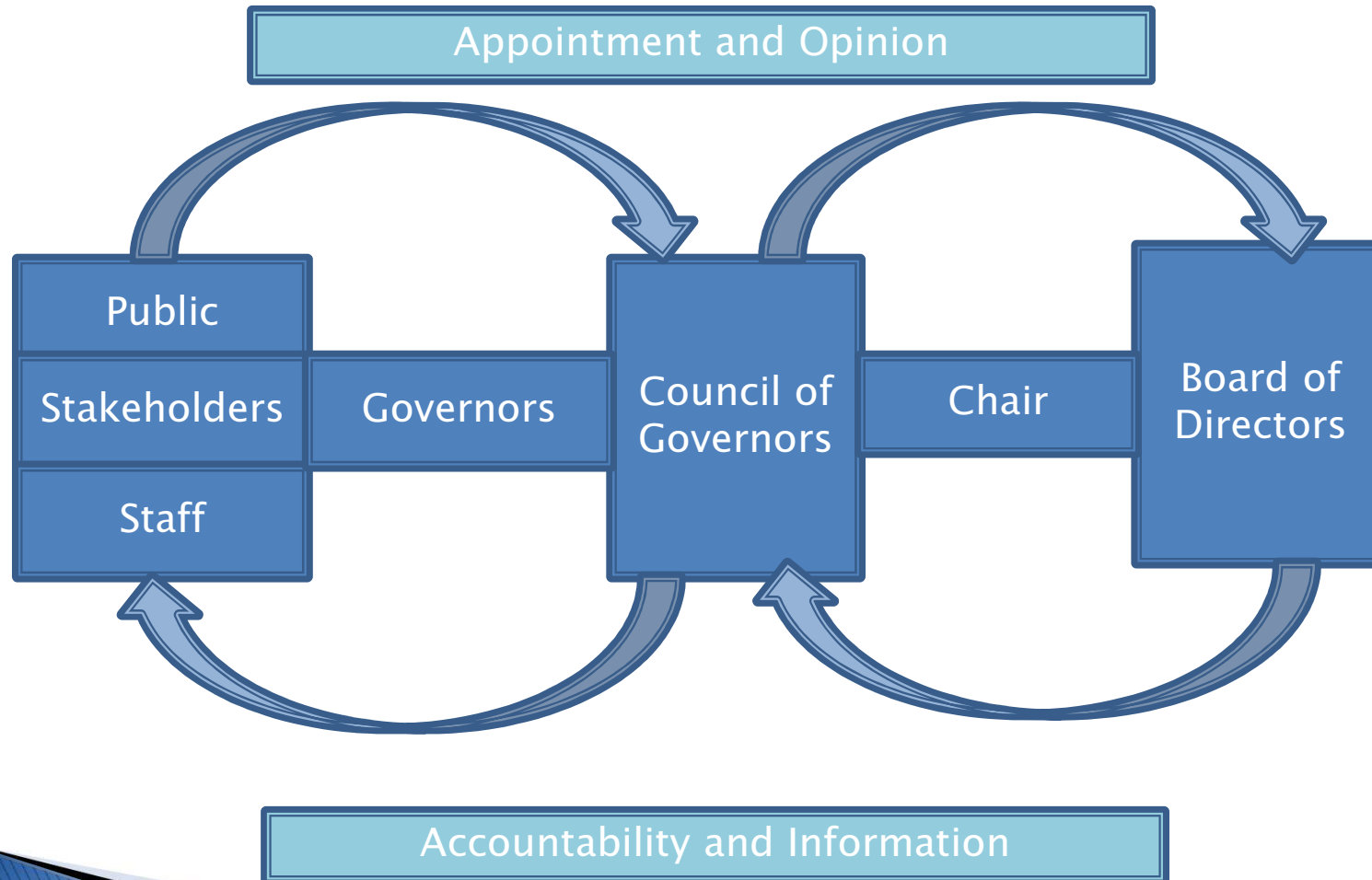


What are Monitor looking for?

- ▶ Is the Board capable of operating this organisation as an autonomous Foundation Trust?
- ▶ Is this a financially sustainable organisation which is focused on the quality of care it provides?



How we will operate as a Foundation Trust



How we will operate as a Foundation Trust

Public Governors	Staff Governors	Stakeholder Governors
Blackburn with Darwen (3)	Medical and Dental (1)	Commissioners (2)
Burnley (2)	Nursing, Midwives & Health Visitors (2)	Local Authorities (2)
Pendle (3)	Scientific, Therapeutic & Technical (1)	Education Providers (1)
Rosendale (2)	Healthcare Assistants & Support Staff (1)	Third Sector Organisations (1)
Ribble Valley (2)	Managers & Senior Managers , Volunteers & Others (1)	
Hyndburn (2)	Administration & Estates (2)	
Rest of England (1)		



GOVERNORS

- Majority elected by members
- Represent members' interests
- Appoint/remove chair and non-executive directors
- Decide the remuneration and allowances and terms & conditions of office of chair and non-executive directors
- Approve appointment of Chief Executive
- Appoint/Remove External Auditor
- Receive Annual Accounts plus auditor's report and Annual Report
- Approve the Forward Plans of the Trust



IBP

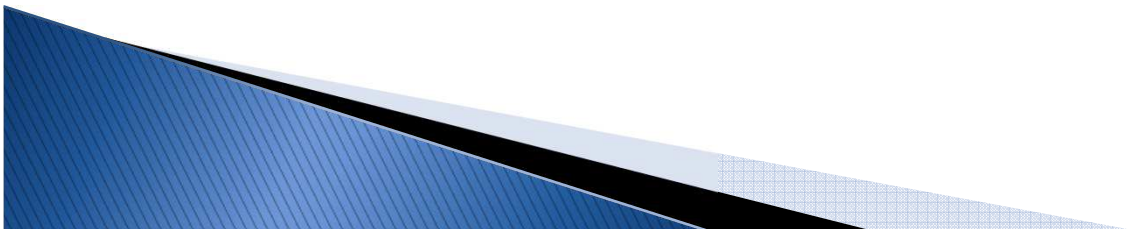
Key Themes/Golden Threads

- ▶ Strong Quality theme throughout the document
 - Patient Quality drives the Clinical Strategy
- ▶ Delivering the benefits of an Integrated Healthcare Provider
 - Patient Pathways
 - Virtual Ward
 - Intermediate Care

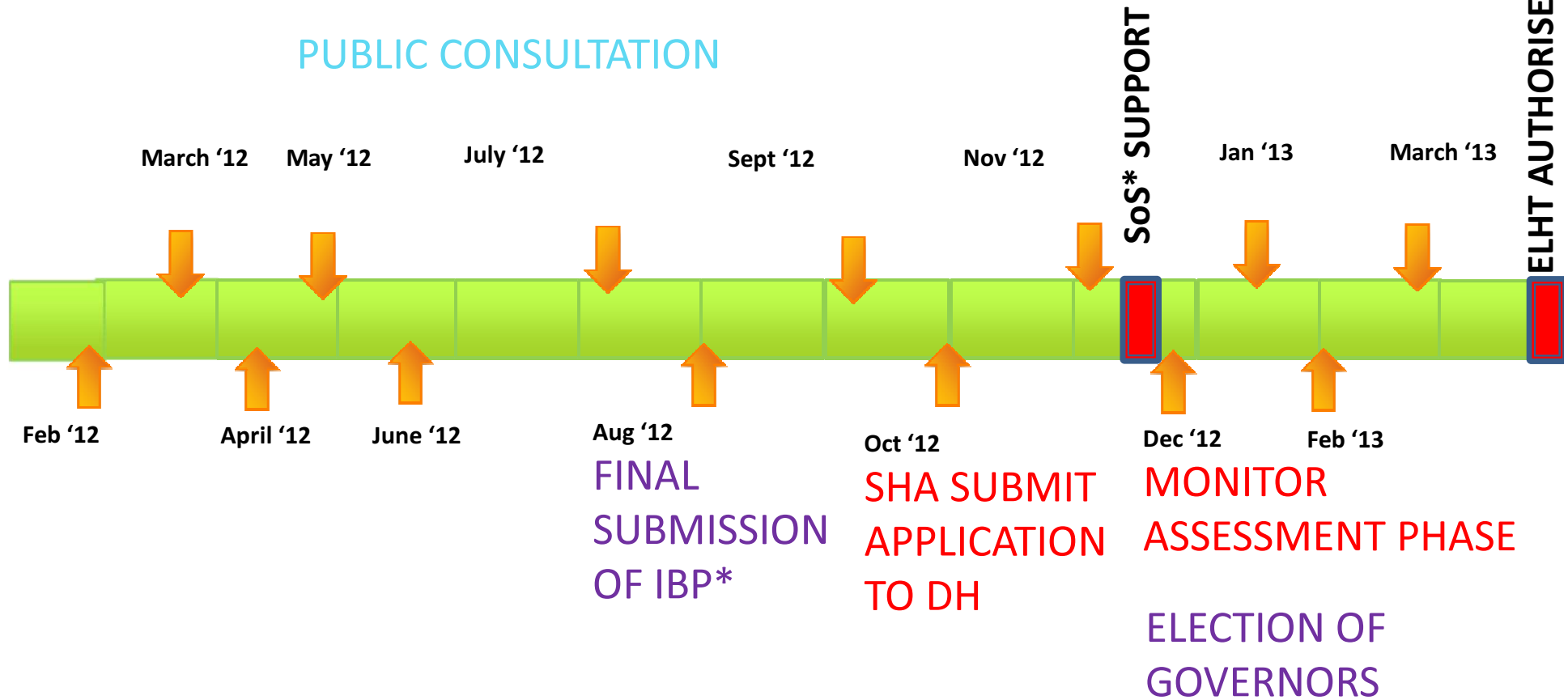


IBP

- ▶ Ambition, but realistic ambition
- ▶ Not assuming significant growth in activity/income
- ▶ Key Service Developments
 - Repatriation of Orthopaedic activity
 - Provision of Urgent Care
 - Pathology
 - Vascular Centre
 - Intermediate Care
 - Obstetrics
 - Oncology



EAST LANCASHIRE HOSPITALS NHS TRUST FT TIMELINE 2012-2013



**IBP – Integrated Business Plan*

**Secretary of State*